



S. 72° 52' 50"
144.36'

(S. 57° 00' 20" E. 1
462.39'

G.I.R.S.
Gravel drive
Road material stock piles

946
930
947
945

ROAD
Signs
Historical sign
U.G. tel. line

664.67'
Conc. walk
Bldg.

(S. 41° 55' 30" W.
39.2'±

4' Tall alum.
flag pole base
typ.

G.I.R.S.
Guy
Conc. sewer lift
station

To Greenwich
N 72° 52' 50" W
551.69'
740.13'

103.1

G.I.R.S.
26.417'

Lands of the
Town of Saratoga
2.01± Acres
(See Deed Ref. 1 & 2)

907
901
901

Approx. location
Guy

U.G. tel. line
Metal guide rail

7' Eave typ.
Flag pole
Sign

One story frame
bldg. w/walkout
basement in rear
40.1'

U.G. tel. line
M.H.
U.G. tel. line
Wood H.C.
ramp
Broken conc.
curbing
U.G. water
lines

Post
office

Canal
Champlain
(See Map Ref. No. 1)
N 31° 25' 30" E
1000.7
1000.8
26.417'

Abandoned
Canal bolt
found
15° E. 79.30'
9.27'

52° 00" E
2.66'
30° E. 65.61'

15° 20" E
15.20'

13° 25' 30" E
63.85'

U.G. gas
35.8'±
Wood planters
Asphalt parking
U.G. tel. line
Sign (197.0')
188.44'

U.G. tel. line
M.H.
U.G. tel. line
Wood H.C.
ramp
Broken conc.
curbing
U.G. water
lines

4.8' Asphalt shoulder typ.
107.3
107.3
107.3

1' Movable conc. curb & gutter typ.
Asphalt parking lot

115
117
111

Conc. ret. wall
Guy
Sign

Historical sign
FERRY

4' Conc. walk typ.

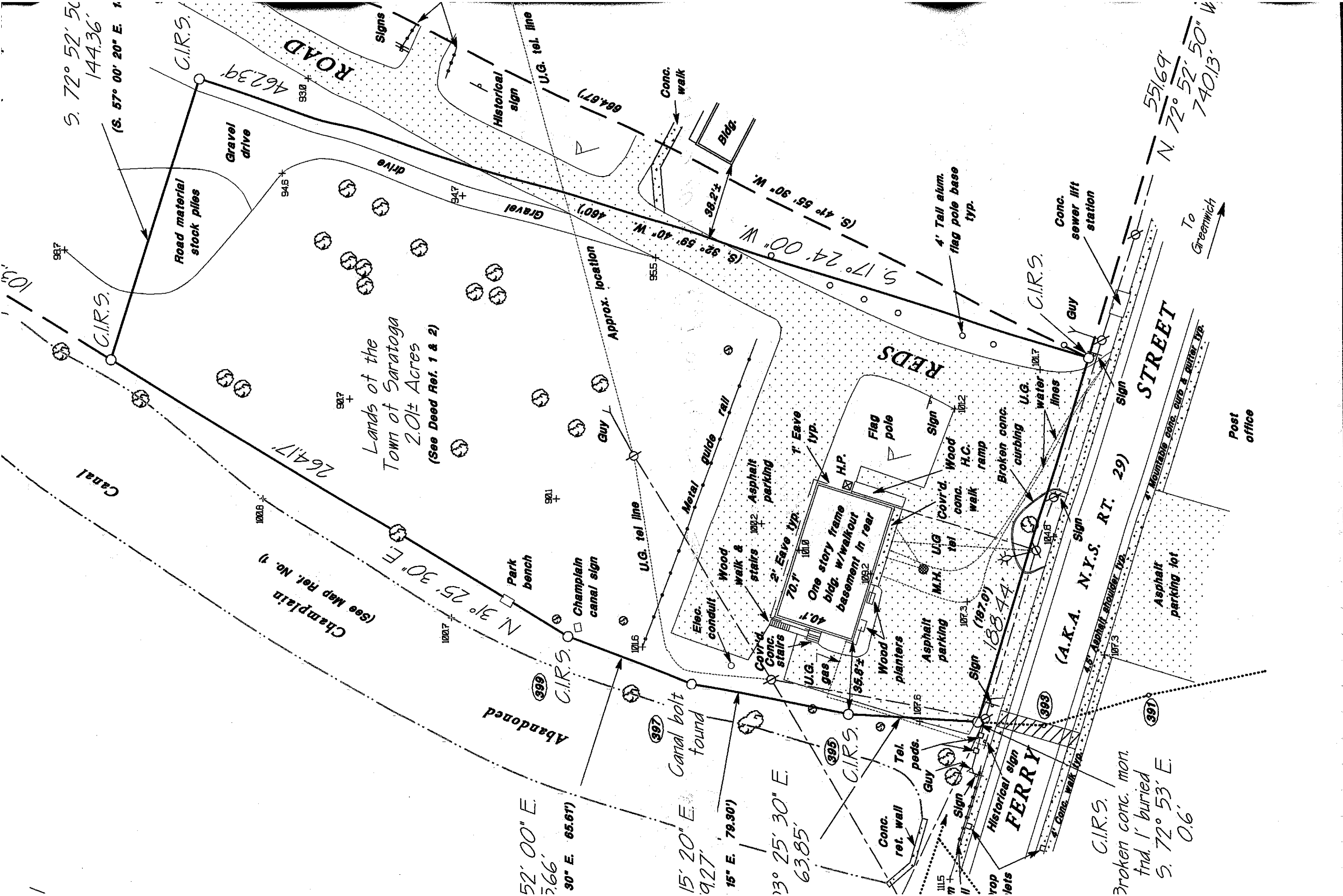
(A.K.A. N.Y.S. RT. 29)

G.I.R.S.
Broken conc. mon.
trd. 1' buried
S. 72° 53' E
0.6'

rop
lets

107.5
107.5
107.5

107.5
107.5
107.5



PLS., All Rights Reserved. Reproduction or copying of this document in any manner is a violation of copyright law unless permission of the author is obtained.