



# Rethinking Schuylerville Government

**A Village Dissolution Study for Schuylerville, NY**

## Communities

*Village of Schuylerville*



Village of Schuylerville, NY



Town of  
Saratoga, NY

## Presented By

**FAIRWEATHER  
CONSULTING**  
*SPECIALISTS IN STRATEGIC CHANGE*

Public Input Meeting

Village of Schuylerville, Saratoga Town Hall

Thursday, May 13<sup>th</sup>, 2010

7:00 PM

NEW YORK STATE  DEPARTMENT OF STATE

**LG** Division of  
Local Government  
Services

This document was prepared with funds provided by the New York State Department of State under the Local Government Efficiency Grant Program.



# Agenda for the Public Input Meeting

## 1. Introductions and Background

- The Dissolution Study Committee & Consultants
- What is a Dissolution Study?
- Where are we in the process?

## 2. The Service Inventory: The Foundation for Informed Decisions

## 3. Service Cost Estimates: How Much Do Services Cost Now?

## 4. Disposition of Services: Where Should Services Go If Village Dissolves?

## 5. Next Steps



Introductions and Background

# The Dissolution Study Committee

## The Dissolution Study Committee

Joan Alheim

*Resident, Schuylerville*

Jean Driscoll

*Resident, Schuylerville*

Jim Miers

*Trustee, Schuylerville*

Margaret Chiperno

*Resident, Schuylerville*

Michael Fay, Co-Chair

*Resident, Saratoga*

Charles Sherman

*Trustee, Schuylerville*

Leona Colvin

*Resident, Schuylerville*

Michael Hughes

*Resident, Schuylerville*

Robert Stokes

*Resident, Saratoga*

Margaret Ditch

*Resident, Schuylerville*

Wendy Lukas, Co-Chair

*Resident, Schuylerville*



## Introductions and Background

# The Project Consultants



**Peter Fairweather**

- Principal and Founder of Fairweather Consulting.
- Over 20 years of experience in strategic planning, economic development, and community planning for local governments in New York State.
- Has served as a strategic advisor to New York State government, county economic development corporations and a variety of not-for-profit and educational institutions.
- Will lead the Fairweather Consulting team's efforts, and assist with legal and fiscal analysis.



**Tim Weidemann**

- Senior Associate at Fairweather Consulting.
- Over 7 years of experience in public sector and nonprofit projects.
- Has facilitated numerous shared services and restructuring studies for local governments and nonprofits in NY, PA, and CT.
- Will be involved all aspects of the dissolution study, and will conduct the fiscal analysis of restructuring options.

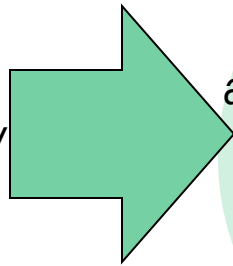


## Introductions and Background

# What is a Village Dissolution Study?

*If the village were to dissolve...what would change?*

What would happen to the **services** provided by the village?



What would happen to laws and regulations of the village?

What would happen to contracts and agreements involving the village?

What would happen to property and equipment owned by the village?

What would happen to village employees?

What would happen to the village's debts and financial obligations?

*How would it affect me?*

Taxes

Services

Community  
Character

Other Possible  
Changes



## The Dissolution Study Process

# How is the Study Developed?

### □ The Dissolution Study Committee

- Conducts research and analysis to identify options
- Assesses the potential impact of each option

*These are the committee's current focus.*

- Compares the potential impacts to identify a preferred option
- Develops a draft dissolution plan for the preferred option
- Submits the study and draft dissolution plan to the Village Board

### □ The Village Board

- Reviews the study and draft dissolution plan and makes changes if needed
- Adopts the plan and a proposition for the ballot in 2011

### □ Village of Schuylerville Voters

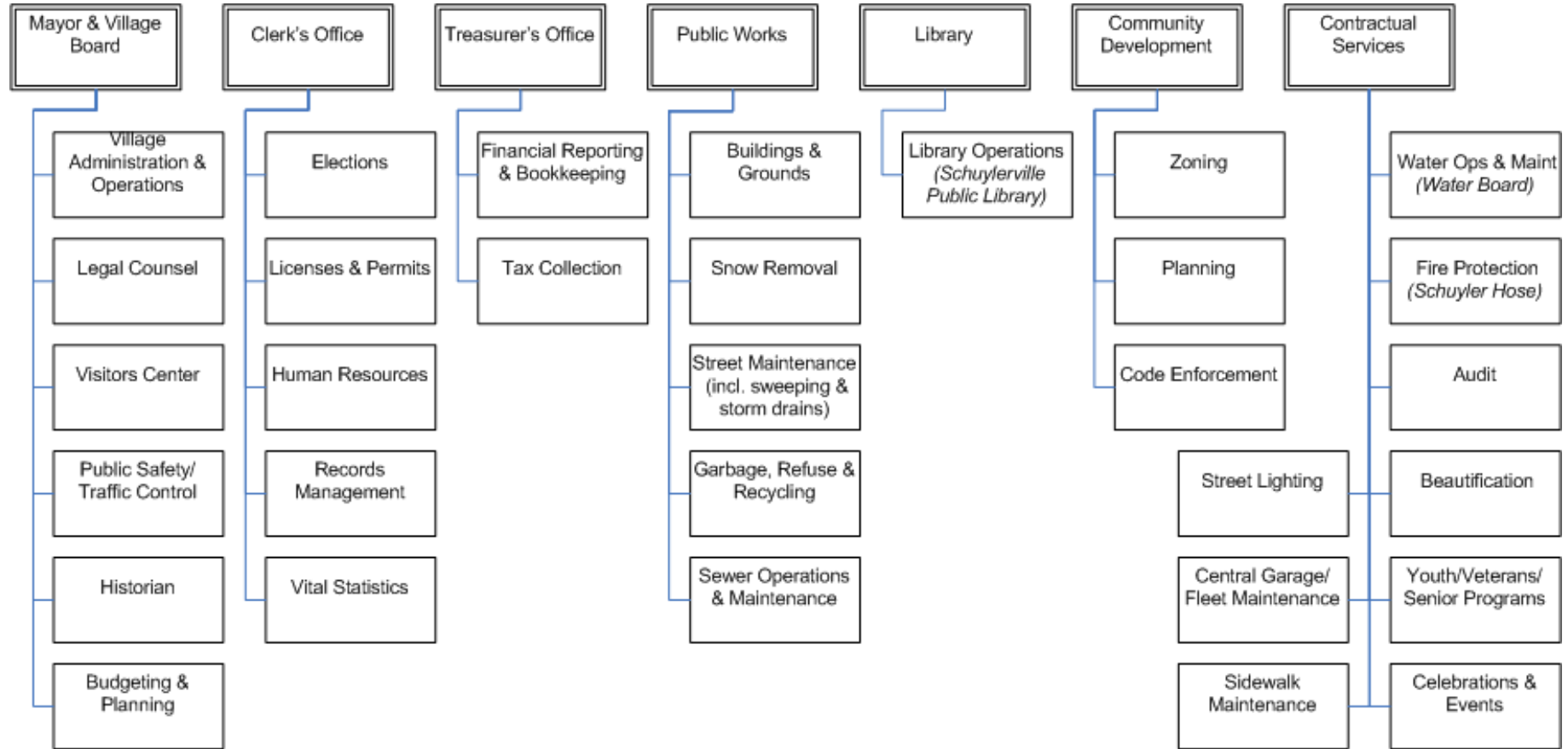
- Review the study, plan and proposition and determine outcome at the polls





## The Service Inventory

# What Services Does Schuylerville Provide Now?





## Service Cost Estimates

# What is a “Service Cost Estimate” And Why Bother?



**Today:** The Village DPW takes care of the village’s buildings & grounds.

**After Dissolution:** The buildings are still there, so someone needs to take care of them.

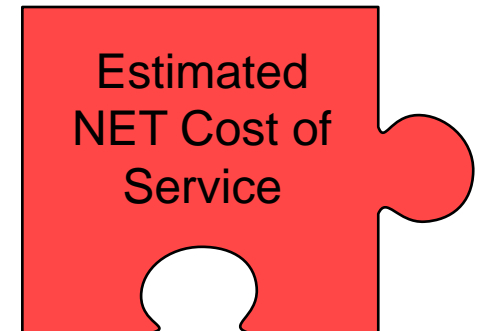
*Before we can decide how to provide this service after dissolution, we need to know how much it costs.*

Expenses

Less

Revenues

Equals



*Some expenses and revenues are shared – we’ve separated these out by service.*

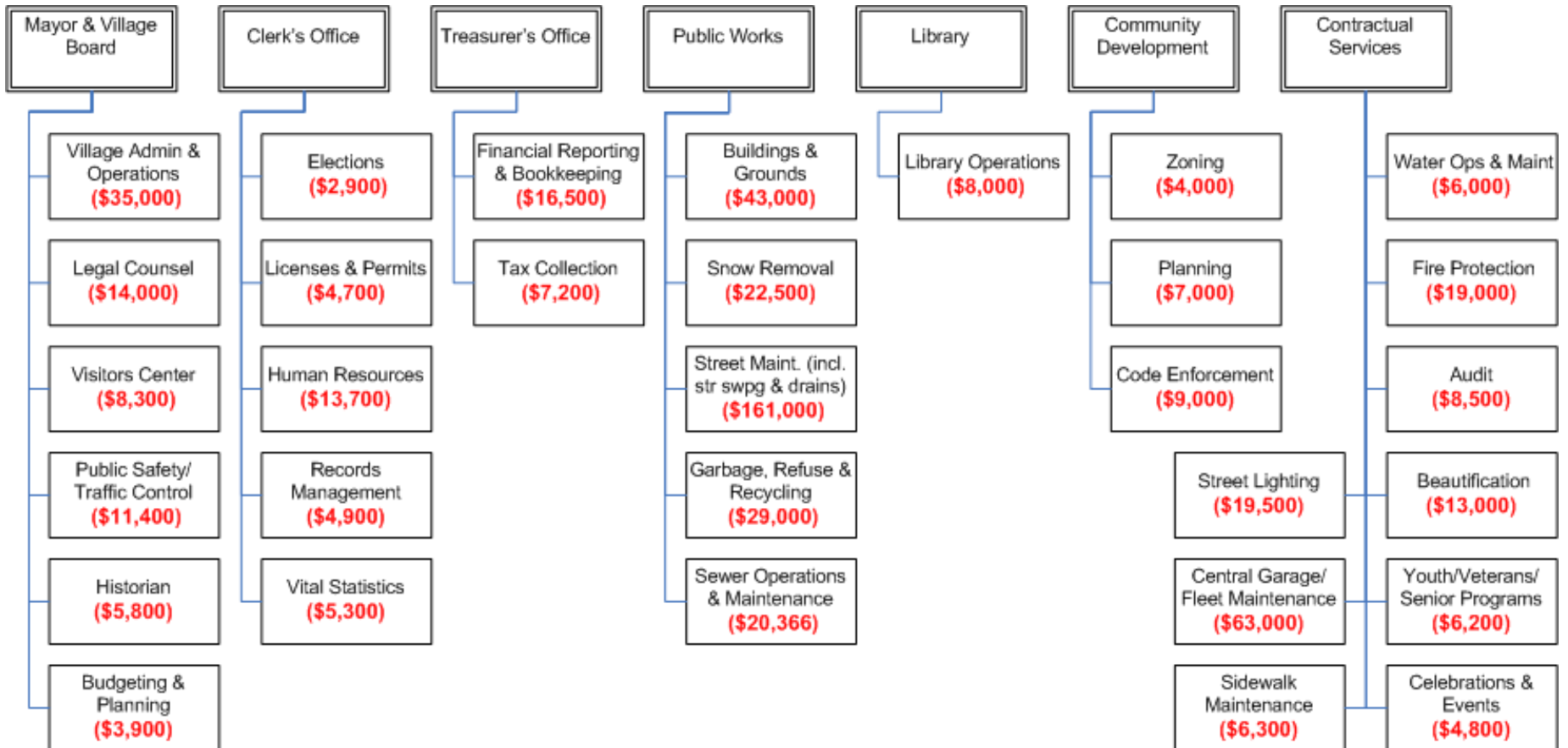
*Our estimates began with 2010 budgets, but we’ve also used actual #s from 2005-2009.*

NOTE: It’s an ESTIMATE, but its based on the best facts and info available.



## Service Cost Estimates

# What Do The Services Provided By the Village Cost?

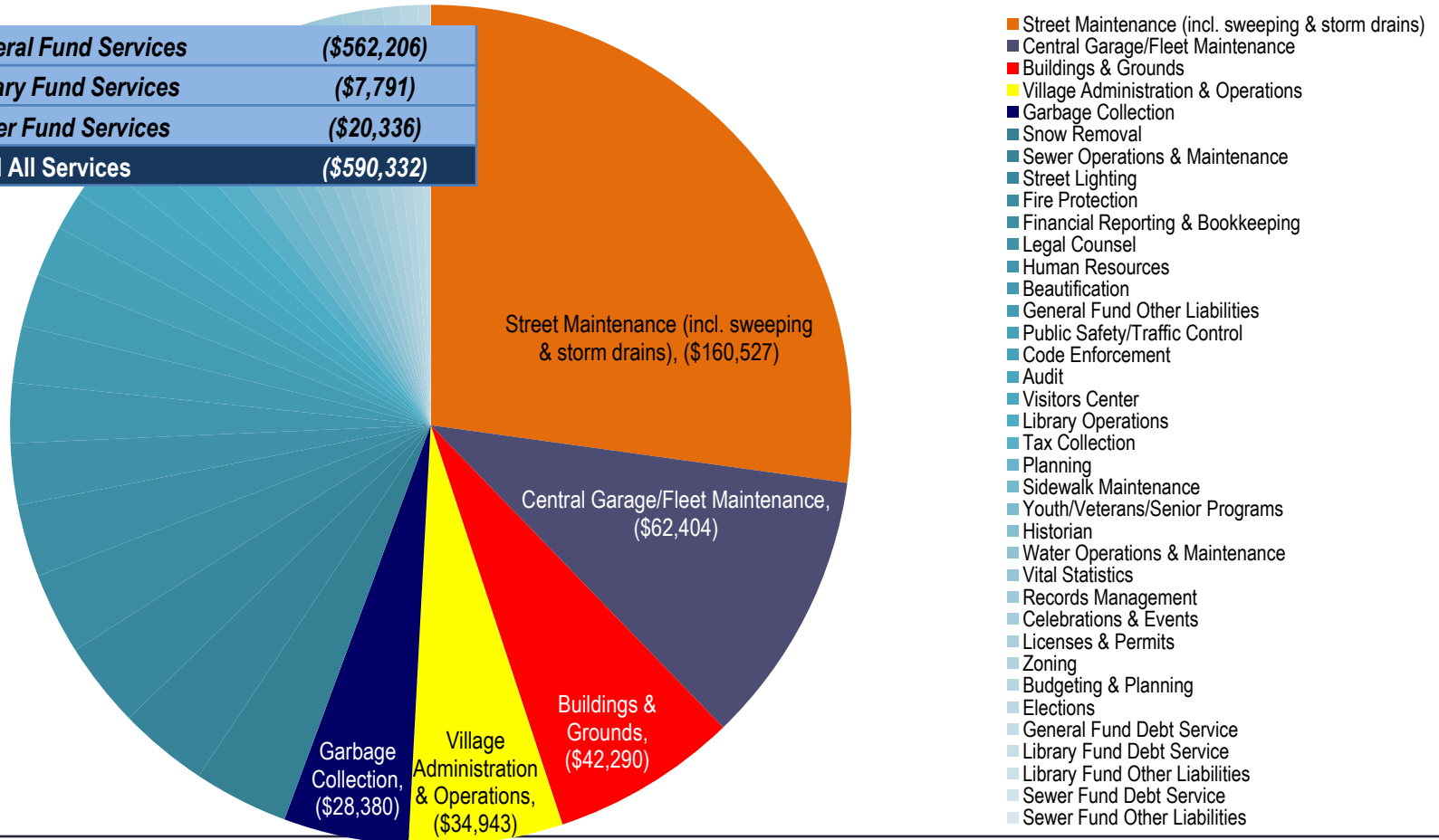


*NOTE: These estimates are subject to change as additional information is gathered throughout the study.*

## Service Cost Estimates

# Top 5 Services Comprise > 50% of the Total Village Budget

Total - General Fund Services	(\$562,206)
Total - Library Fund Services	(\$7,791)
Total - Sewer Fund Services	(\$20,336)
<b>Grand Total All Services</b>	<b>(\$590,332)</b>





Service Cost Estimates

# Service Cost Estimates Break-Down Current Village Budget...

Village of Schuylerville



Saratoga (Townwide)



Saratoga (Outside)



## *Breakdown of Service Costs*

### **Before Dissolution:**

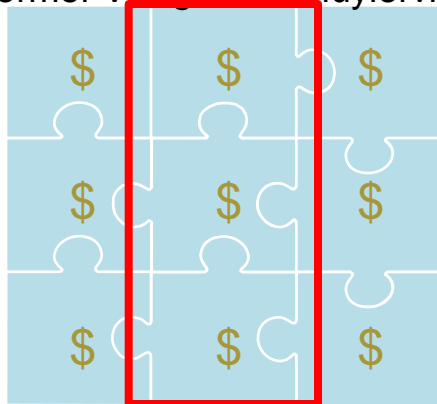
- Village services are separate from town services.
- In the town, some services are provided to the entire town (townwide), while others are provided only outside of the two villages.
- Altogether, the combined cost of services is what drives the village and town budgets, and in turn the village and town tax rates.



## Service Cost Estimates

# ...So That We Can See How Dissolution Would Change Budgets

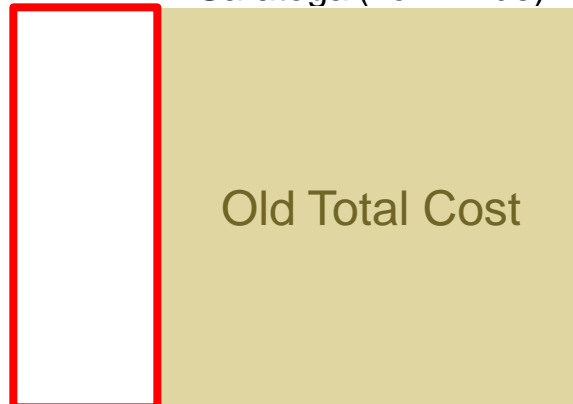
Former Village of Schuylerville



*Retained Costs*

*New Total Cost*

Saratoga (Townwide)



*Added Costs*

Old Total Cost

*New Total Cost*

Saratoga (Outside)



*Added Costs*

Old Total Cost

*New Total Cost*

### After Dissolution:

- Some village services are likely to be incorporated into current town services (e.g. Street Maintenance).
- Others might be provided only to the former village area through a Special District created by the Town.

# Special District vs. Townwide: Who Pays How Much?

- Let's assume that no services are eliminated during dissolution, and the cost of providing each service stays the same.
- WHERE a service is provided can have a big impact on HOW MUCH it costs.
  
- **Special District**
  - The cost of the service gets spread over a limited number of benefited properties in the former village
  - To the extent that services are provided through special districts, village tax rates don't change after dissolution
  
- **Town (Outside Victory)**
  - The cost gets spread over a much larger tax base
  - So, the total tax rate decreases for properties in the former village
  - But, then properties outside the village are paying, too, so their total tax rate goes up

# **Group Exercise: Where Should Services Go If the Village Dissolves?**

- Form into groups of 5 – 8 people
- Each group should choose a recorder and a presenter
  - Recorder will document the group's ideas on the worksheet provided
  - Presenter will summarize the group's ideas back to the audience at the end
- For each service identified on the worksheet, discuss among yourselves the following two questions:
  - Would this service require special attention in the former village area after dissolution? Why?
  - Who benefits from this service? Residents inside/outside the village?  
Businesses inside/outside the village?
- Document your group's consensus conclusions on the worksheet.





# The Dissolution Study Process

## Public Engagement Opportunities

Meeting Name	<i>Dissolution Study Committee Meetings</i>	<i>Presentation of Draft Feasibility Study &amp; Comparative Analysis</i>	<i>Next Public Input Meeting</i>	<i>Presentation of Draft Dissolution Plan &amp; Proposition</i>	<i>Presentation of Final Dissolution Plan &amp; Proposition</i>
Meeting Date	<b>Monthly (4<sup>th</sup> Mondays)</b>	<b>July, TBD</b>	<b>July-September, TBD</b>	<b>September, TBD</b>	<b>October, TBD</b>
Meeting Type	Committee Working Meeting	Joint Town/Village Board Meeting	Public Meeting	Public Meeting/ Committee Meeting	Public Hearing of the Dissolution Study Committee
Meeting Purpose	Review project progress and provide input and feedback. Meetings are open to the public, but public comments are not part of the agenda.	Present the draft results of the analysis of service delivery options, including legal and fiscal analysis. Gather input and feedback from Town/Village Boards.	Present the results of the analysis of service delivery options, including legal and fiscal analysis. Gather input and feedback from residents.	Explain the Dissolution Plan & Proposition, including the final fiscal impact analysis (with est. tax impacts), and describe the remaining steps leading up to the election.	Satisfies Village Law requirement for the Dissolution Study Committee to hold a public hearing to present its findings prior to submitting to Village Board.
Primary Audience	Dissolution Study Committee	Town/Village Board Members	Town/Village Residents	Town/Village Residents	Town/Village Residents
Other Invited Attendees	N/A	Town/Village Residents	Town/Village Board Members	Town/Village Board Members	Town/Village Board Members

# The Dissolution Study Process

## Public Engagement Opportunities

<http://schuylerville.ning.com>

Look here for popular study documents

Click on a topic to learn more about the study process and to provide comments.

Click here to become a member (required to enter your comments)

Look here for upcoming meetings

The screenshot shows the homepage of the 'Rethinking Schuylerville Government' website. The header includes the title and subtitle: 'Rethinking Schuylerville Government: A Village Dissolution Study for Schuylerville, NY'. Below the header is a navigation menu with links for 'Main', 'My Page', 'Members', 'My Input', 'Documents', 'Calendar', and 'Committee Area'. The main content area is divided into several sections: 'Welcome to the Schuylerville Village Dissolution Study Web Site', 'Popular Downloads' (with links to presentations from various meetings), 'Latest Activity' (with recent posts from the 'Rethinking Schuylerville Government' group), and 'Events' (listing a 'Public Kick Off Meeting' on March 2, 2010). A red box highlights the 'Forum' section, which contains sub-sections for 'Study Materials', 'Meetings', 'News', and 'External Resources'. A red arrow points from the 'Sign Up' button in the top right corner to the text 'Click here to become a member...'. Another red arrow points from the 'Popular Downloads' section to the text 'Look here for popular study documents'. A third red arrow points from the 'Meetings' sub-section in the forum to the text 'Look here for upcoming meetings'. A fourth red arrow points from the 'Study Materials' sub-section to the text 'Click on a topic to learn more about the study process...'. The URL 'http://schuylerville.ning.com' is displayed in red text above the screenshot.



# Questions & Discussion

What have you heard about the Dissolution Study?

Do you have unanswered questions?

What brings you here tonight?



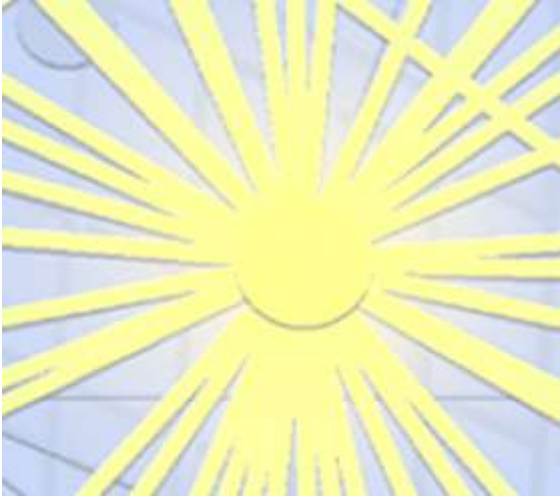
Did we cover the topics you expected?

Do you have ideas that you'd like to share with us?



# Next Steps

- **Take service cost estimates and your recommendations for disposition of services and determine impact of dissolution**
  - Impact on assets/debts
  - Impact on village employees
  - Impact on village laws/regulations
  - Impact on village contracts/agreements
  - Impact on budgets and taxes for **ALL VILLAGE AND TOWN RESIDENTS**
  
- **Look at other alternatives and determine impact**
  
- **Discuss options with Town officials**
  
- **Hold interim meeting to present recommended options**



# Rethinking Schuylerville Government

**A Village Dissolution Study for Schuylerville, NY**

## Communities

*Village of Schuylerville*



Village of Schuylerville, NY



Town of  
Saratoga, NY

## Presented By

**FAIRWEATHER  
CONSULTING**  
SPECIALISTS IN STRATEGIC CHANGE

*Thank you for your participation!*

Stay involved between now and our next public meeting:

- <http://schuylerville.ning.com>
- Committee working meetings on the fourth Monday of each month



## Village of Schuylerville Dissolution Study

# **Other Comments and Ideas**

Your input is important! If you have comments or ideas that you wish to add to the ones discussed during the meeting, feel free to write them down on this sheet. Make sure to hand it in or leave it on the sign-in table before you leave.

You can leave your comments anonymous, or you can provide your name below.